



ANNUAL REPORT

2022-23

TABLE OF CONTENTS

LETTER FROM CEO	1
OUR MISSION & VISION	2
ABOUT US	7
SETU	10
SCHOOL WASH	14
EDUCATION: RJVM	20
DONOR TESTIMONIALS	22
OUR SUPPORTERS AND LEADERSHIP	24
FINANCIALS	26
CONNECT WITH US	29



LETTER FROM CEO

As we reflect on the year gone by, we do so with a heavy heart, deeply mourning the loss of our beloved founder, Mr. Nirbhay Jain. His indomitable spirit was the driving force behind empowHER India, and his unwavering passion to dedicate one's life for the less fortunate illuminated our path. While we miss him profoundly, we are determined to carry forward his legacy. Mr. Jain's light shines brightly within us, inspiring us to continue his mission, ensuring that the flame of empowerment, dignity, and education he ignited continues to burn brightly whether he is with us or not.

The year 2022-23 has been a testament to our commitment to creating positive change in the lives of rural adolescent girls across the nation. We are delighted that the Government has acknowledged our efforts, leading to a district-level partnership with the Raigad Education department. This transition enables empowHER India to evolve from a purely community-based program to an in-school initiative, integrating Setu classes into the school curriculum during regular school hours. EmpowHER India has remained steadfast in its mission to empower, educate, and uplift the lives of these young girls. Through a range of initiatives, we have continued to make a significant difference in their lives, helping them become confident individuals ready to overcome adversity.

Our collective efforts have resulted in the transformation of countless lives. The spirit of Mr. Jain lives on through our work, and we are deeply grateful for the dedication of our team, partners, and supporters who have continued to fuel this journey of empowerment. As we move forward, we remain committed to championing the rights and potential of rural adolescent girls. Together, we will continue to nurture their abilities, ensure their dignity, and kindle the flame of education, paving the way toward a brighter and more equitable future for all.

Ms. Anamara Baig
CEO, EmpowHer

OUR VISION

empowering HER to live a life of dignity and equity.

OUR MISSION

Transform the lives of 1 million women and girls to realize their full potential by 2030

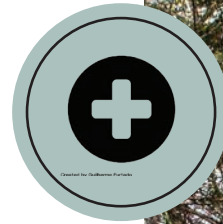
FOSTERING GENDER EQUALITY THROUGH INCLUSIVITY

empowHER India proudly champions gender equality both within our organization and in the communities we serve. We actively work to integrate women into various roles, from village trainers to leadership positions. Our commitment extends to providing mentorship, and a safe, inclusive work environment for our female staff. This approach serves as a powerful model for our students, demonstrating that women can excel in any field, breaking societal norms. By ensuring women's active participation in our organization, we reinforce the transformative potential of women's leadership and work towards a more inclusive and equitable future, both within empowHER India and the broader society.



Good Health and Well-being:

By providing access to clean and hygienic toilets in schools, empowHER contributes to improving student attendance, health, and cognitive development, aligning with the goal of good health and well-being.



Quality Education:

empowHER is committed to ensuring inclusive and equitable quality education for all. Access to proper sanitation facilities in schools helps make education inclusive, particularly for adolescent girls, reducing dropouts and promoting positive hygiene practices.



Gender Equality:

empowHER actively works to end discrimination against women and girls. Through education and awareness, especially for men, the organization addresses cultural taboos surrounding girls' bodies, helping girls pursue education, higher aspirations, and participate equally in society.



Reduced Inequalities:

empowHER's work in promoting clean and accessible toilets in schools reduces gender-based inequalities by preventing girls from dropping out during puberty, thus reducing disparities in educational opportunities.



**SUSTAINABLE
DEVELOPMENT GOALS (SDG)**

OUR PROGRAMS



SETU

Our flagship program helps bridge the gap between an unequal present and a more secure future for an adolescent girl. Through our carefully designed modules on life skills, health, gender and financial literacy, our goal is to build a new generation of self-reliant, independent, and empowered girls who will drive real and lasting change.



School WaSH

empowHER India is committed to providing adolescent friendly toilets in upper primary schools along with a yearlong behavior change program so that girls stay in school and continue their education.



Education

Supporting the holistic education of over 450 girls and boys from underserved backgrounds for over 20 years, through a semi-aided government school in Panvel.

ABOUT US

empowHER India, a 29-year-old NGO founded in 1993 by Mr. Nirbhay Jain, is dedicated to empowering women and girls in India. The organization was established in response to the lack of basic medical assistance in rural areas and the pervasive gender inequality. Through its flagship initiative, Program Setu, empowHER India strives to bridge the gap between the current challenges faced by girls and a brighter future. Over the past 12 years, empowHER India's 'Women Empowerment through Self Help Groups' Program successfully created a network of reliable Self-Help Groups, promoting financial inclusion, entrepreneurial ideas, and interventions vital for women's empowerment. Recognizing that women's issues begin in adolescence, the organization has focused on adolescent girls since 2020, emphasizing access to education, sanitation, and life skills.

The organization works closely with grassroots village communities to promote gender parity, ensuring girls' equal participation in community prosperity. Since launching Program Setu in 2020, they have empowered over **4000** adolescents. In January 2023, empowHER India transitioned to a school-based approach, initiating work in 25 new schools in Karjat. The school-based approach aligns with the academic calendar, running from June to March each year.



CORE VALUES AND APPROACH

Collaboration

empowHER India works in collaboration with village communities, local and block-level leadership, parents, school authorities, and other stakeholders

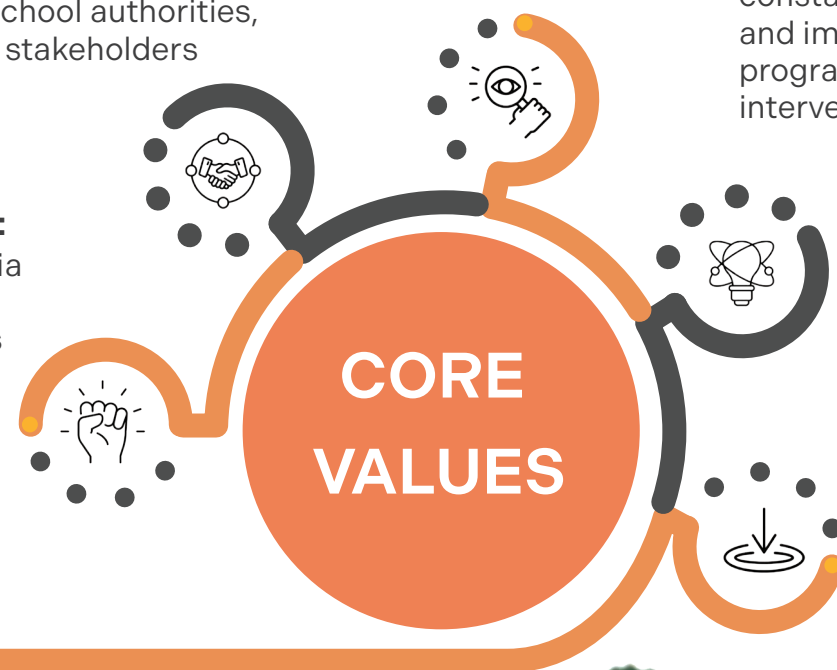
Transparency

empowHER India is committed to transparency and accountability through all the programs conducted in the field.

Innovation

empowHER India is constantly innovating and improving the programs and interventions

Empowerment: empowHER India believes that adolescent girls are the catalysts for social transformation.



Impact

empowHER India is committed to making a real difference in the lives of girls.

empowHER India's approach is based on the following principles:

Girls are the catalysts for social transformation: When girls are empowered, they can break the cycle of poverty and inequality, and create a better future for themselves, their families, and their communities

Community participation is essential empowHER India works in close collaboration with village communities to ensure that their programs are sustainable and responsive to the needs of the community.

Data-driven decision-making empowHER India uses field-based information to track their progress and measure their impact. This information is used to improve their programs and ensure that they are making a real difference in the lives of women and girls.

OUR REACH IN 2022-23

77
Number of villages reached

02
Number of blocks

27
Number of Gram Panchayat meetings

122
Total number of Government functionaries engaged

2027
Total number of adolescents impacted

560
Parents reached










Setu is a program by empowHER India that aims to empower rural girls by equipping them with essential life skills. The program recognizes the unique challenges and barriers that girls in rural areas face and seeks to address them through a variety of initiatives and interventions. Setu in Hindi means “bridge” and is designed to help adolescent girls cross the bridge from adolescence to adulthood, from inequality to equality. The program is a long-term initiative that focuses on personal and skill development, education, and community engagement.



Objectives

Empowerment: Setu aims to empower rural girls by fostering self-confidence, self-esteem, and a sense of agency. It seeks to break the cycle of disempowerment that many girls face in rural communities.

- 
Life Skills: The program places a strong emphasis on imparting essential life skills, including communication, problem-solving, decision-making, and leadership skills. These are crucial for personal development and success in various aspects of life.
- 
Health and Well-being: The program promotes physical and emotional well-being, including access to healthcare, nutrition, and menstrual health support. It also addresses issues like early marriage and teen pregnancy.
- 
Financial Literacy: The program promotes physical and emotional well-being, including access to healthcare, nutrition, and menstrual health support. It also addresses issues like early marriage and teen pregnancy.
- 
Community Engagement: SETU encourages financial independence and teaches girls about financial literacy, savings, and entrepreneurship. This helps them become more self-reliant and capable of making informed financial decisions.
- 
Awareness: The program encourages girls to actively engage with their communities, fostering a sense of social responsibility and leadership. It also promotes gender equality and women's rights.

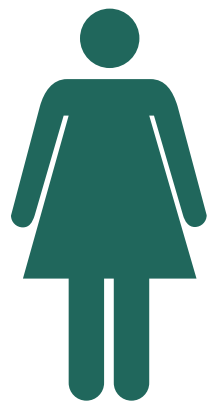
SETU- Evidence Based Impact

On an average across all 5 modules, on a scale of 1 to 5, children jumped at least 2 levels.

5 MODULES ARE



COMPETENCY WISE IMPACT



In the pre-test only **6%** girls reported to being adequately equipped to handle mental, physical and emotional changes during adolescence. This number jumped to **67%** in the post test.

The number of girls who felt that they were not at all prepared to seek help and protect themselves from violence and exploitation decreased from **72%** in the pre test to a mere **4%** in the post test.

Number of children who felt they were well equipped to manage their time grew by **67** percentage points between pre test and post test.

Successes, Challenges, and lessons learnt

In the journey of Program Setu, there have been significant successes, challenges, and invaluable lessons learned along the way.

Successes



Government Partnership: Signed an Mou with Education Department (Raigad District) to implement the Setu program in-schools.

Life Skills Development: Girls have gained essential life skills, including interpersonal skills, health and nutrition knowledge, financial literacy, which empower them for a brighter future.

Community Engagement: Helped in fostering awareness and changing societal norms, contributing to the well-being of the young girls.

Challenges



Resource Limitations: Adequate resources, including funding and infrastructure, have been a consistent challenge in implementing the program comprehensively.

Cultural Resistance: Overcoming deep-rooted cultural resistance to girls' education and other gender-related issues has been a persistent challenge.

Lack of time when working in schools: Resistance of teachers to provide time for the program within school hours.

Lessons Learned



Community Involvement: Active involvement and buy-in from the community are vital for the success of such programs, and building trust takes time.

Tailored Approaches: Adapting the program to the unique cultural and social contexts of each village is crucial for effectiveness.

Long-term Vision: Implementing a long-term vision with comprehensive monitoring and evaluation is key to measuring impact and making necessary adjustments.

Empowerment Through Education: The program has underscored the transformative power of education and life skills in shaping the future of girls and boys in underserved communities.

Collaborative Partnerships: Collaborative partnerships with local authorities and organizations are essential for garnering support and resources resources.








SCHOOL WaSH: School Construction and Hygiene Program

empowHER India's School WaSH Program, concentrates on constructing adolescent-friendly school toilets and promoting hygiene among upper primary rural school students. It is rooted in the need to cater to the distinct needs of this age group. The program enhances health, dignity, and learning environments, fostering gender inclusivity and societal well-being. By instilling good hygiene practices and empowering adolescents, it extends benefits beyond the school, impacting families and communities. In this way, Program school WaSH plays a pivotal role in improving public health and creating confident, informed,



Objectives

-  Enhance sanitation facilities in upper primary rural schools by constructing adolescent-friendly toilets.
-  Promote better hygiene practices among rural students.
-  Reduce the risk of diseases and infections, contributing to students' overall health and well-being.
-  Strong emphasis on addressing the unique needs of adolescent girls, including menstrual hygiene, to create an equitable learning environment.
-  Bring about behavioural change among students, fostering long-term habits that extend beyond the school environment.

Ultimately, the program has a broader goal of improving public health by extending the knowledge and practices learned by students to their families and communities, promoting community-wide health. The scope of the program covers infrastructure development, hygiene promotion, capacity building, monitoring, community engagement, and empowerment, all geared toward creating a healthier and more equitable environment for upper primary rural school students.



4 toilets constructed in **4** government Upper Primary Schools.



348 students now have access to sanitation facilities in their school premises



136 Behaviour change and Hygiene sessions conducted in schools.



60 parents actively engaged in school improvement activities

What Sets Us Apart

Hygiene training and behaviour change initiatives

Hygiene training and behaviour change initiatives are cornerstones of promoting healthier and safer schools. It raises awareness, educate students and parents on hygiene practices, particularly in areas of handwashing and sanitation, and address issues related to safe food handling.



Behaviour-change initiatives engage communities, shifting social norms, and culturally sensitive approaches. Positive reinforcement, rewards, and continuous education are key strategies used to encourage and maintain good hygiene practices. By combining knowledge with effective strategies, these initiatives significantly reduce preventable illnesses and enhance overall community well-being. Importantly, these efforts also contribute to the sustainability of the program, ensuring its long-term success and impact in the communities served.

Collaborations with local authorities and communities

Through monthly school meetings involving parents, teachers, and other stakeholders, the program fosters community engagement and transparent communication. These gatherings provide a platform for feedback, issue resolution, and resource support. Advocacy and alignment with local priorities ensure contextual relevance, and the resulting community buy-in contributes to long-term sustainability. This collaborative approach ensures that the program's objectives, such as improved sanitation and hygiene, are effectively met and upheld within the community.



Successes, Challenges, and lessons learnt

In the journey of Program Setu, there have been significant successes, challenges, and invaluable lessons learned along the way.

Successes



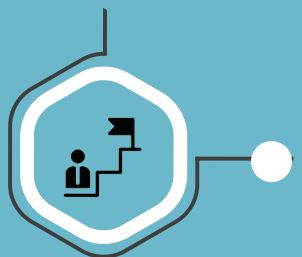
Improved School Sanitation: The empowHER India WaSH Program has witnessed significant success in constructing safe and hygienic school toilets. This has led to a cleaner and more comfortable learning environment for children, reducing the spread of waterborne diseases and improving their overall well-being.

Enhanced School Attendance: As a result of the improved WaSH facilities and hygiene practices, school attendance has notably increased by 70% particularly among girls. **Behaviour Change:** The program has successfully instilled positive hygiene behaviours among students. Children have become hygiene champions in their homes, influencing their families to adopt better sanitation practices.

Community Involvement: Increased participation of parents and community members in school improvement activities, recognizing the value of WaSH in their children's education.

Sanitation Champion Leader: The recognition of a "Sanitation Champion Leader" within the school has encouraged students to take a leadership role in promoting hygiene and cleanliness. This initiative has inspired students to become ambassadors for hygiene in their communities.

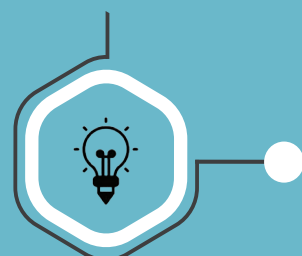
Challenges



Resource Constraints: Limited resources and funding can pose a challenge in the construction and maintenance of WaSH facilities. Ensuring sustainable access to clean water and sanitation can be an ongoing challenge.

Community Participation: Ensuring consistent community involvement and commitment in monthly meetings can be a challenge, as other priorities and commitments may sometimes take precedence..

Lessons Learned



Community Engagement: Actively involving the community in program planning and decision-making is vital for success. It fosters a sense of ownership and long-term commitment to the program.

Behaviour Change Communication: Effective communication and interactive approaches in hygiene education play a crucial role in behaviour change. Recognizing and rewarding student efforts through "Star Students" helps sustain enthusiasm.

Gender-Sensitive Approach: Providing separate and safe sanitation facilities for girls is essential to promote gender equality and increase female attendance. This approach respects the privacy and dignity of girls during menstruation.

Resource Mobilization: The program has learned to leverage community resources and partnerships to address resource constraints and ensure the sustainability of WaSH facilities.



Toilet under construction

Completed Toilet





RAKESH JAIN HIGH SCHOOL- Improving the Access to Quality Education

The Rakesh Jain School is a shining example of the impact that empowHER India can have on the lives of rural children. Through its holistic approach to education, empowHER India has helped to transform the school into a place where students can thrive both academically and personally.

450 underserved students provided quality education



Enhancing the learning environment

The Rakesh Jain School, an integral part of empowHER India's education initiative, stands as a beacon of hope for 450 students from economically disadvantaged backgrounds in the Shivkar village of Panvel, Maharashtra. Beyond academics, empowHER India has worked tirelessly to create a holistic educational experience, including extracurricular activities like music lessons, sports, and annual health check-ups. This comprehensive approach has yielded exceptional results, with the school consistently achieving a pass percentage of above 80% in the SSC exams from 2009 to 2023. This accomplishment is particularly remarkable given the lower pass rates prevalent in rural regions throughout India. empowHER India expresses sincere gratitude for the ongoing support and aims to empower even more students, enriching their educational journey and illuminating the path to brighter futures.

Activities carried out in the year

empowHER India at Rakesh Jain School has led a holistic approach to education, nurturing students to break barriers and achieve academic excellence. This is achieved through quality education, well-trained teachers, basic laboratory facilities, computer education, and extracurricular activities. musical instrument training, sports training, and inter-school competitions have also enriched the students' overall development.

DONOR TESTIMONIALS

Testimonial for WaSH:

“As long-term donors to empowHER India, we have witnessed first-hand the remarkable impact of the Let’s Build Toilets Project on the lives of women and girls. Our commitment to supporting empowHER India in fulfilling Panvel’s and Karjat’s sanitation needs stems from our shared belief that everyone deserves access to safe and clean sanitation. Their proven track record in implementing sustainable sanitation programs has made a noticeable difference in the lives of families, especially women and girls. The fact that these programs are tangible and have a lasting presence in the community gives us great satisfaction. Our donation has extended beyond the direct beneficiaries, uplifting the overall well-being and dignity of the entire community. Witnessing the ripple effect of positive change, we are determined to continue making a lasting impact by improving the lives of female students in schools that need sanitation facilities.”

Matthew D’Cunha
Senior Manager HR (Head - Learning and Development & CSR)
Alkyl Amines Chemicals Ltd.

Testimonial for Education:

“Here’s a shout-out to empowHER India, the charity that’s got my heart! They are all about lifting our amazing women and children who are struggling. They’re like superheroes, providing education, hygiene, healthcare, clean drinking water, and so much more. They have had an incredible impact on these people’s lives. empowHER India is all about giving these ladies the tools they need to break free from poverty and injustice. It’s been a privilege to support this awesome organization that’s making real, lasting change. Let’s cheer them on as they keep rocking the world and changing lives.”

Rachna Shamsi

Testimonial for Setu:

“After learning about empowHER India’s impact on rural adolescent girls, I was deeply moved and felt the need to support them. Their Program Setu is designed to empower young girls, enabling them to break the cycle of poverty and gender inequality, ultimately leading to sustainable change in their villages. What impresses me about empowHER India, is their unwavering commitment to transparency and accountability. They consistently provide updates on their initiatives, ensuring donors like myself are well-informed. This makes me confident in their ability to manage donations effectively. Being part of their mission fills me with immense pride and satisfaction, and I eagerly anticipate witnessing the ongoing positive impact they will undoubtedly have on the lives of Indian rural girls.”

Himanshu Sanghavi
Managing Director at Vinmar India
(Overseas Polymers)

LEADERSHIP AND BOARD OF TRUSTEES

FOUNDERS

Late Mr Nirbhay Jain
Mrs Urmila Jain

BOARD OF DIRECTORS AND TRUSTEES

Mr. Utsav Kapadia
Mrs. Varsha Jain
Mr. Vishal Jain
Mr. Pradeep Jalan
Ms. Shefali Kapadia
Mr. Sanjiv Anand

ADVISORY BOARD

Mr. Sushil Kumar Jiwrajka, Member
of the Advisory Board

Mr. Paras Chowdhary, Member of the
Advisory Board

CEO

Ms. Anamara Baig, CEO



INSTITUTIONS AND CORPORATE PARTNERS

INSTITUTIONS AND CORPORATE PARTNERS

Alkyl Amines Pvt Ltd
Atur Foundation
Graficali
Graficali Solutions
One-Up Financial Consultants P. Ltd
Overseas Polymers Pvt. Ltd.
Pantheon Infrastructure
Peroshaw Dhunjishaw Bolton Charities
Sevak Trust
Sukhraj B. Nahar Charitable Trust
Texport Industries Pvt. Ltd.
United Way of Mumbai

INDIVIDUAL DONORS

Anuradha Pittie
Devendra Darda
Gopal Motwane
Karuna Sonthalia
Mohan Punjabi
Padmini Khare Kaicker
Rachna Shamsi
Rahul Vohra
Ritu Sharma
Shefali Kapadia
Shobha Motwane
Sushil Kumar Jiwrajka
Sushila U. Kapadia
Utsav Kapadia

FRIENDS OF EMPOWER INDIA

Anya Seth
Girija Azavedo
Hemali Surve
Prabhleen Kaur
Shailesh Kudale
Shravan Agarwal (Cloud flare)

FINANCIALS

The Maharashtra Public Trusts Act, 1950

SCHEDULE - IX
[Vide Rule 17 (1)]

Name of the Public Trust : **EMPOWHER FOUNDATION (Formerly Known As SKS CHAKSHU FOUNDATION)**

Registration No. - **E - 14562**

Income and Expenditure Account for the year ending 31st March, 2023

EXPENDITURE	Rs.	Rs.	INCOME	Rs.	Rs.
To Expenditure in respect of properties :- Rates, Taxes, Cesses Repairs and maintenance Salaries Insurance Depreciation (by way of provision of adjustments) Other Expenses	- - - - - -	-	By Rent (accrued) (realised) * (Gross TDS - Rs. 2,02,950/-, P.Y.-1,89,000/-) By Interest (accrued) (realised) * On Securities On Income Tax Refund On Bank Account i) On Fixed Deposit (Gross TDS -0, PY -11,848/-) ii) On S. B. A/C	20,28,500.01 - - - - - 24,107.00 4,725.00 2,07,153.00	20,28,500.01 - - - - - 24,107.00 4,725.00 2,07,153.00
To Establishment Expenses (As per Annexure "F")	-	53,97,106.00	By Dividend	-	-
To Remuneration to Trustees	-	-	By Donations in Cash or Kind	2,75,590.00	2,75,590.00
To Remuneration (in the case of a math) to the head of the math, including his household expenditure, if any ..	-	-	By Capital gains on Mutual Fund Units	6,16,328.00	6,16,328.00
To Legal & Professional Charges	6,38,477.00	-	By Grants	-	-
To Audit Fees	47,200.00	-	By Income from other sources	2,03,031.00	2,03,031.00
To Contribution and Fees	-	-	By Transfer from Reserve	-	-
To Amount written off : (a) Bad Debts (b) Loan Scholarship (c) Irrecoverable Rents (d) Other Items (Fixed Assets)	- - - 3,51,218.00	3,51,218.00	By Deficit carried over to Balance Sheet	55,26,205.00	55,26,205.00
To Security Charges (Edu)	-	-			
To Depreciation	-	-			
To Capital Losses on Mutual Fund Units	-	-			
To Amount transferred to Reserve or Specific Funds	-	-			
To Expenditure on Objects of the Trust (a) Religious (b) Educational (c) Medical Relief (d) Relief of Poverty (e) Other Charitable Objects	- - - 24,52,638.00 -	24,52,638.00			
To Surplus/(Deficit) carried over to Balance Sheet	-	-			
Total Rs.....		88,86,639.00	Total Rs.....		88,86,639.00

As per our report of even date
FOR M.L. SHARMA & CO.
FIRM REGN NO. 109963W
CHARTERED ACCOUNTANTS

(Signature)
(Vikash L. Bajaj) Partner
Membership No. 104982

* Strike off whichever is not applicable

For empowHER Founda

(Signature)
Authorized Sign
TRUSTEES

Place : MUMBAI
Date:

The Maharashtra Public Trusts Act, 1950

SCHEDULE - VII
[Vide Rule 17 (1)]

Name of the Public Trust : **EMPOWHER FOUNDATION (Formerly Known As SKS CHAKSHU FOUNDATION)**

Registration No. E - 14562

Balance Sheet as on 31st March, 2023

FUNDS AND LIABILITIES	Rs.	Rs.	PROPERTY AND ASSETS	Rs.	Rs.
Trusts Funds or Corpus - (As Per Annexure "A") Balance as per last Balance Sheet Add: Donation Received during the year (as per details attached) Less: Adjustment to Income & Expenditure account	4,50,68,183.00 15,00,000.00 4,65,68,183.00 (59,33,753.00)	4,06,35,430.00	Immovable Properties :- (At Cost)(As Per Annexure "B") Balance as per last Balance Sheet Additions i) Land of training centre ii) Building of training centre iii) Building - School Less: Sales during the year Depreciation up to date	2,44,39,517.00 - - - - - 2,44,39,517.00	
Other Earmarked Funds :- (Created under the provisions of the trust deed or scheme or out of the Income) Depreciation Fund Sinking Fund Reserve Fund Class Room Fund Any other Fund (As Per Annexure "A")	- - - - 3,07,73,044.00	3,07,73,044.00	Investments :- (As Per Annexure "C") Note: The market value of the above investments is Rs. 4,78,88,065.48/-	- - - - 3,91,35,430.00	
Loans (Secured or Unsecured) :- From Trustees From Others	- -	-	Fixed Assets :- (As Per Annexure "D") Balance as per last Balance Sheet Additions during the year Less: Sales during the year Depreciation up to date	12,57,892.00 6,40,634.00 3,61,696.00 -	15,45,618.00
Liabilities :- For Expenses For Micro Financing Scheme For Rent and Other Deposits For Others	2,01,265.00 1,20,000.00 38,220.00 42,960.00	4,02,465.00	Loans (Secured or Unsecured): Good / doubtful Loans Scholarships (As Per Annexure "E") Other Loans	8,40,000.00 -	8,40,000.00
Income and Expenditure Account :- Balance as per last Balance Sheet Less: Appropriation, if any	2,24,746.00 -		Advances :- To Trustees To Employees To Contractors To Lawyers To Deposits To Others	- 36,807.00 - - 66,600.00 3,12,181.00	4,15,588.00
Add/(Less) : Surplus/(Deficit) as per Income and Expenditure Account.....	(55,26,205.00)		Income Outstanding :- Rent Receivables Interest Receivables Other Receivables	1,46,500.00 - 11,688.00	1,58,188.00
Add: Transfer from Corpus Fund	59,33,753.00	6,32,294.00	Cash and Bank Balances :- (a) In Saving Account with (b) In Fixed Deposit Account (c) With the Trustee (d) With the manager	59,08,092.00 - - -	59,08,092.00
			Income and Expenditure Account :- Balance as per Balance Sheet Less: Appropriation, if any Less: Surplus as per Income and Expenditure Account	- - -	
Total Rs.....		7,24,43,233.00	Total Rs.....		7,24,43,233.00

As per our report of even date
FOR M.L. SHARMA & CO.
FIRM REGN NO. 109963W
CHARTERED ACCOUNTANTS

(Signature)
(Vikash L. Bajaj) Partner
Membership No. 104982

* Income Outstanding
(If accounts are kept on cash basis)
Rent :
Interest :
Other Income :
TOTAL RS. :

The above Balance Sheet to the best of our belief contains a true account of the Funds and Liabilities and of the Property and Assets of the Trust.


For empowHER Foundation

(Signature)
TRUSTEES
Authorized Signatory




SOCIAL MEDIA


 <https://www.facebook.com/empowHERIndiaFoundation/>


 https://www.instagram.com/empowHER_india/

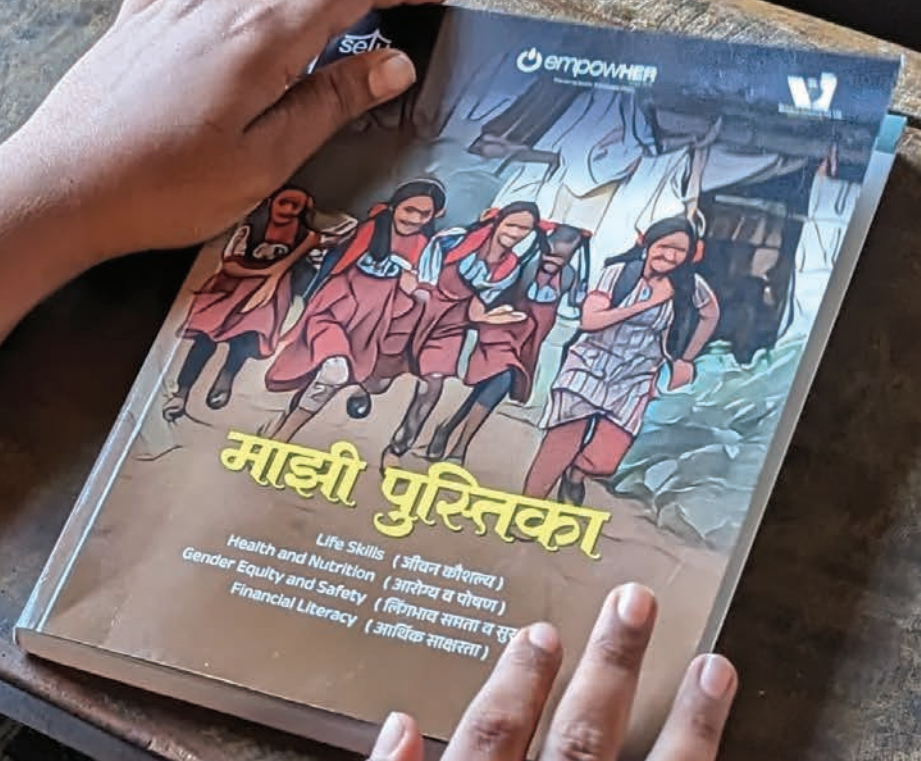
 https://twitter.com/empowHER_India

 https://www.youtube.com/@empowHER_India-

 <https://www.linkedin.com/company/empowHER-india-foundation>

 <https://empowHERindia.org/>

 info@empowHERindia.org



© empowHER India

Publisher: empowHER India

Head Office: 308, Nirman Kendra, Famous
Studio Lane, Dr E. Moses Road, Mahalakshmi,
Mumbai, Maharashtra 400011

Karjat Field Office Address:

30, Gauri Nandan Niwas, Kokan Ali, Vengaon
Road, Dahiwali, Karjat 410201, Maharashtra.