




Empowering Women. Transforming Villages

A decorative graphic consisting of a dotted yellow line that starts as a straight arrow pointing up and to the right, then curves into a loop that points back towards the left.

I DREAM OF A  
WORLD WHERE I  
AM HAPPY, SAFE  
AND THRIVING

**Annual Report 23-24**





# Letter from the CEO

Dear Friends and Supporters,

This year has been one of tremendous growth, learning, and reflection for all of us at empowHER India. Expanding our Setu program from one block in Raigad to three was both exciting and humbling. We took a major step forward by bringing the program into schools, which meant learning how to work closely with teachers and headmasters on a regular basis. Securing their ongoing support was one of our biggest challenges—and greatest accomplishments.



Another significant shift was introducing boys into our program design. While this came with its own set of hurdles, it was a necessary evolution. We know that to truly empower girls, we must engage boys in the conversation and journey towards equality.

As we grew, we also focused on growing ourselves. Our team more than doubled in size, and we made a conscious effort to invest in training and capacity building by bringing on experienced staff. With this expanded team, we're better equipped to deliver on our mission.

But no matter how much we do, it sometimes feels like it's never enough. Every time we hear about violence against women or witness the persistent gender inequalities in our society, we are reminded how much work remains. There is no easy fix for this, but I firmly believe that change will only happen when we start changing mindsets.


At this juncture, I want to express my deepest gratitude to all our donors and supporters who stand with us in this fight. Your belief in our mission keeps us going. I also want to extend an invitation to others who share this vision to join us—because together, we can move faster toward the world we want to see.

# Table of Contents

<b>About empowHER -</b>	<b>1</b>
<b>Setu-</b>	<b>5</b>
<b>School Wash Program -</b>	<b>13</b>
<b>Education Rakesh Jain Madhyamik Vidyamandir (RJMV) -</b>	<b>17</b>
<b>Media &amp; Press -</b>	<b>23</b>
<b>Our donors &amp; supporters -</b>	<b>25</b>
<b>Financials -</b>	<b>27</b>



## VISION

Empowering  
HER to live a   
life of Dignity  
and Equity

## MISSION

 million girls  
impacted by 2030

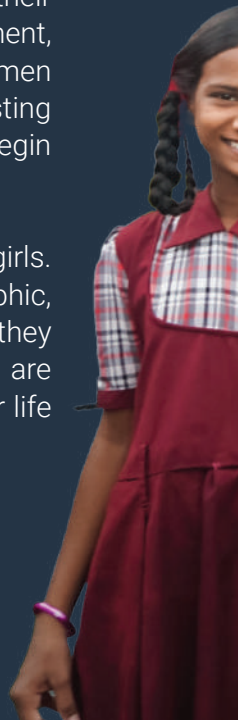


# About empowHER India

With three decades of dedicated work at the grassroots level, empowHER India has positively impacted over 90,000 lives across rural villages. Initially established as a rural development organization, empowHER India's primary focus has been the empowerment of women, guided by the firm belief that empowering women is the most effective way to uplift entire communities.

For years, empowHER India spearheaded initiatives targeting adult women, addressing their challenges and helping them reclaim their agency. However, through years of engagement, one profound realization emerged: patriarchy doesn't start in adulthood—it affects women from birth and intensifies as they grow older. The conclusion was clear: to bring about lasting change in the minds, attitudes, and behaviors of future generations, interventions must begin early.

With this insight, empowHER India shifted its focus to empowering adolescent girls. Recognizing the transformative potential of working with this younger demographic, empowHER India aims to build their confidence, independence, and life skills, ensuring they are equipped to navigate and shape their futures. The organization's interventions are designed to give these girls the tools, knowledge, and resources needed to enhance their life outcomes and break free from the constraints of patriarchal norms.



# Reach

68  
schools

4  
blocks

24  
Villages

4178  
Adolescents Reach

2298  
Parents

700  
Gov. officials



# Program Overview

## Setu

This program aims to equip adolescents, especially girls, with the knowledge, tools, and skills to boost their confidence, strengthen their sense of agency, and build emotional resilience as they navigate the complexities of adulthood. By encouraging girls to challenge and question existing socio-cultural and gender norms, the program seeks to break the cycle of intergenerational vulnerability, empowering them to overcome challenges and stressors with confidence and purpose.

## School WaSH

This program ensures that students in rural government schools have access to clean, safe sanitation facilities, allowing them to relieve themselves with dignity. By providing these essential services, we help reduce dropout rates, especially for girls at the onset of puberty. Our holistic approach involves engaging parents and teachers as key stakeholders, promoting not only the construction of facilities but also fostering lasting behavior change around hygiene practices.

## Rakesh Jain Madhyamik Vidyamandir (RJMV)

For the past 25 years, empowHER India has supported RJMV, which educates 450 students annually. What began as an effort to provide education for girls in areas lacking schools for them, has now evolved into a beacon of progress. Today, no girl in the surrounding villages is out of school. RJMV has grown to feature state-of-the-art classrooms, a library, a laboratory, and various other resources. empowHER India supports a range of extracurricular activities, ensuring a well-rounded education for all students enrolled.





काळाच्या  
साठावरती

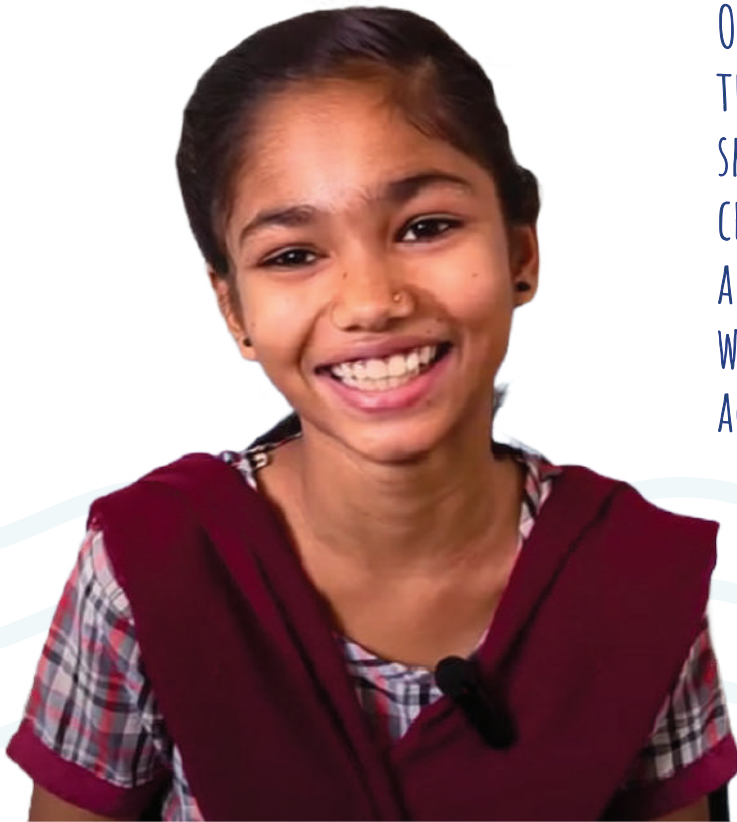




2023-24 marked a pivotal year for Setu for two key reasons: We launched our first in-school program and expanded our footprint to new locations. This was a critical test to assess whether Setu's program design is truly scalable and adaptable across diverse settings.

Setu is a sincere effort to confront challenging societal norms. We face the harsh reality of a deeply unequal world, where women often bear the brunt of injustice. What does it take to change this? How do we create an equitable environment where girls and women can thrive on a level playing field?

OUR MISSION IS TO EXPLORE THE TRANSFORMATIVE POTENTIAL OF LIFE SKILLS—HOW THEY CAN EMPOWER, CHANGE ATTITUDES, RESHAPE BEHAVIORS, AND ULTIMATELY ENHANCE THE WELL-BEING OF GIRLS BY BUILDING THEIR AGENCY AND RESILIENCE.



## SOCIO EMOTIONAL SKILLS

knowing yourself, empathy, stress management, emotional regulation, effective listening and communication



## GENDER AND SAFETY

gender bias and discrimination, gender equality, my body my right, types of violence, how to stay safe

# What Adolescents Learn through

# Setu

## FINANCIAL LITERACY

understanding types of money, need vs wants, managing income and expenditure, learning about banking and saving

## COGNITIVE THINKING SKILLS

Decision making, problem solving, conflict resolution, goal setting and time management



## HEALTH AND NUTRITION

staying healthy, MHM, physical and emotional changes, reproductive health



## ADOLESCENT PARTICIPATION

For the first time we included boys in the group sessions after expanding our program to schools. Initially, we were uncertain whether the curriculum—particularly on sensitive topics such as understanding body parts for both genders and the physical changes during adolescence—would be appropriate for mixed-gender groups. However, we were pleasantly surprised by the active participation of both boys and girls. Neither group hesitated to contribute, demonstrating a level of comfort and engagement that exceeded our expectations.

**A total of 3013 adolescents were enrolled into the Setu program through the community and school-based intervention.**

## PARENTAL ENGAGEMENT

Empowering girls requires more than individual focus—it necessitates the involvement of their entire ecosystem. Just as boys, who significantly influence the experiences and life outcomes of girls, are included in our efforts, parents also play a critical role in fostering empowerment. One of our core strategies is to actively engage with parents, equipping them to create supportive environments at both the household and community levels, where girls can truly thrive.

Through Setu, our team regularly held theme-based meetings with parents to guide and inform them.

INTRODUCTORY SESSION AND IMPORTANCE OF EDUCATION

PROMOTING HEALTH AND GENDER EQUALITY

DISCUSSING ADVERSE EFFECTS OF CHILD MARRIAGE

SEXUAL HARASSMENT AND OUR RESPONSIBILITY

In the past year, 229 parent meetings were conducted, reaching 1,716 parents through school-based interventions. Additionally, the community-based program conducted 131 meetings and reached 367 parents.

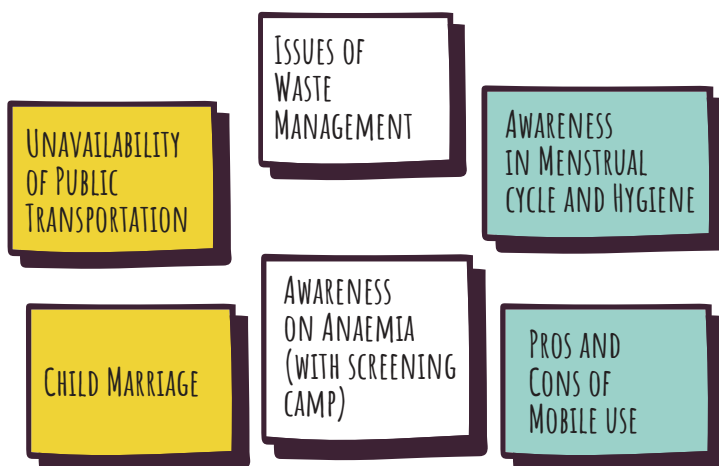


## ENGAGEMENT WITH GOVERNMENT FUNCTIONARIES

The Setu Program has fostered close collaboration with various government functionaries, not only to provide periodic updates on program progress but also to ensure their cooperation for effective implementation. Our trainers conducted regular meetings with ASHA workers, Anganwadi workers, Sarpanches, members of Gram Panchayats, Gram Sevaks, School Management Committees, and other key stakeholders. Over the past year, more than 500 meetings were conducted at different levels to strengthen these partnerships.

## COMMUNITY ACTION BY ADOLESCENT GIRLS

Following the completion of the training modules, adolescent girls actively participated in project work and presentations to showcase how they applied the life skills and other competencies gained through the Setu Program. The girls identified key issues affecting children and adolescents in their villages, selecting themes to focus on for their projects. Some of these themes included:



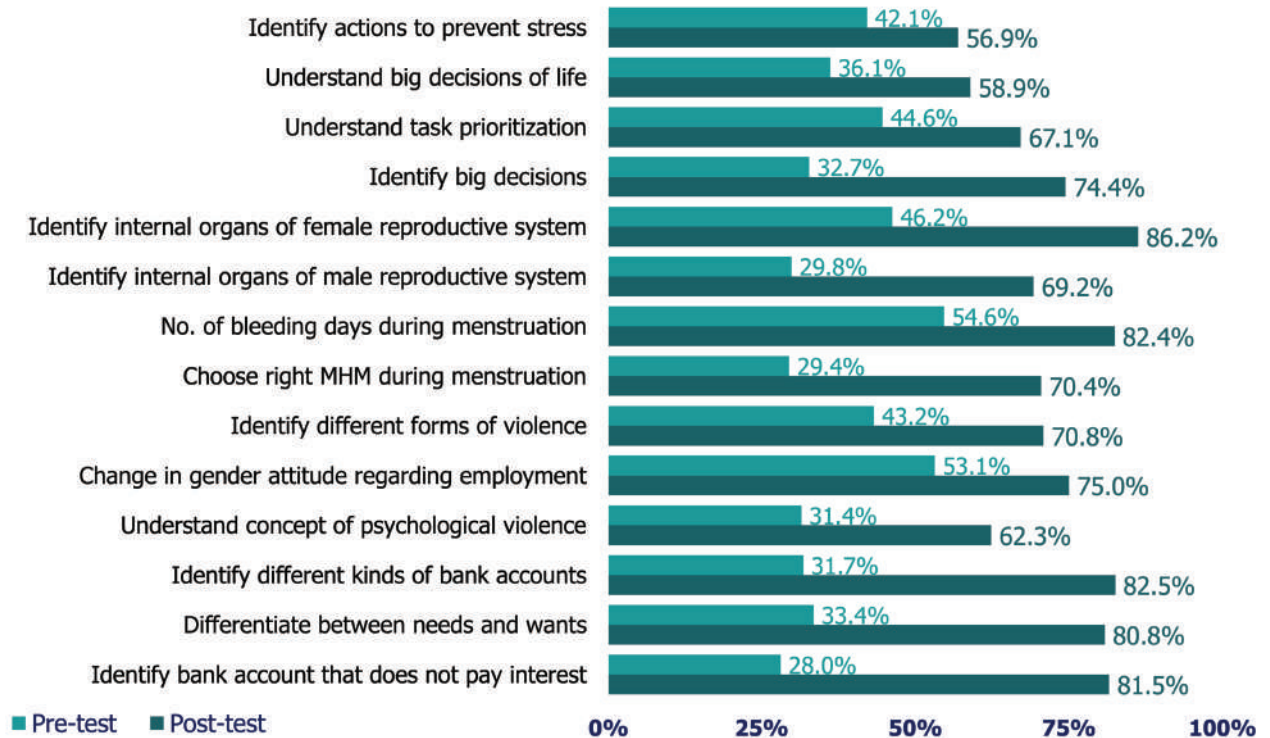
## KEY BREAKTHROUGH

For the first time since its inception, empowHER India is expanding into a new district through a CSR partnership. In December 2023, the Setu Program was launched in two blocks of the Sambhajinagar district (formerly Aurangabad). During the 2023-24 fiscal year, we completed the inception-phase activities, which included the identification of target blocks, intervention villages, and the selection of adolescent girls for the sessions. Moving forward, we plan to implement comprehensive field-based activities in the 2024-25 fiscal year, including Setu sessions and deeper engagement with the community and key stakeholders.





## Competency-based Impact

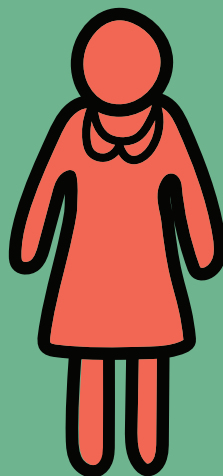




## The Setu Program has had a significant and measurable impact on adolescents, as demonstrated by the results of the pre- and post-tests conducted to assess key areas of growth and understanding.

Students' ability to identify actions to **prevent stress** improved from **42.9%** in the pre-test to **57%** in the post-test, reflecting enhanced coping skills.

Awareness about **menstrual hygiene** improved significantly, with the percentage of students who could correctly answer questions about menstruation materials growing from **29%** to **70%**



**Prioritization skills** also improved, with the number of students able to correctly identify task prioritization jumping from **44%** to **67%** after the sessions.

A critical improvement was observed in the ability to **identify different forms of violence**, increasing from **43%** to **71%** after the program.

Knowledge of **reproductive health** saw a huge leap, with students' understanding of the reproductive organs growing from **46%** to **86%** post-training. Specifically, understanding of male reproductive systems increased by 40 percentage points.

**Financial literacy** also saw massive improvements, with knowledge about different types of bank accounts rising from **32%** to **83%**, while the understanding of "needs vs. wants" increased from 33% to 81%.

**Psychological violence**, a difficult topic to grasp, saw a major improvement in understanding, with the correct responses increasing from **31%** to **62%**.

**These results highlight the tangible progress made by the Setu Program in empowering adolescents with critical life skills, reproductive health knowledge, and financial literacy.**

# School WaSH Program

Access to safe and hygienic sanitation is a basic human right, yet many children are denied this due to inadequate facilities in schools. Schools are foundational in shaping the future of every child, but when critical infrastructure is lacking, especially proper sanitation, it often leads to negative outcomes. This issue disproportionately affects girls, many of whom drop out due to the absence of clean and private facilities. For an organization focused on empowering girls, ensuring they remain in school is vital to their success.

VERY FEW ORGANIZATIONS ARE TRULY DEDICATED TO THE WELL-BEING OF COMMUNITIES, STUDENTS, AND SCHOOLS. FOR STUDENTS TO LEAD HEALTHY LIVES, THEY MUST LEARN AND ADOPT PROPER HYGIENE PRACTICES—FROM WASHING THEIR HANDS TO KEEPING THEIR SURROUNDINGS CLEAN. EMPOWHER INDIA HAS BEEN INSTRUMENTAL IN TEACHING THESE ESSENTIAL SKILLS TO OUR STUDENTS.



Our School WaSH Program addresses this by providing access to high-quality sanitation facilities in schools, paired with a year-long behavior change initiative. This approach not only improves the immediate infrastructure but also fosters a culture of hygiene and sustainability within the school environment, helping girls stay in school and pursue their education without barriers.

715

Total

215

Parents Participation

297

Gov officials

07

Villages

## Toilet Construction



**188 toilets  
were constructed**

In 2023-24, empowHER India successfully built two school toilets in the villages of Chai and Boregaon. The construction process emphasized timely completion, with careful planning around site identification, addressing water accessibility issues, and preparing rugged surfaces for development. Collaboration with local panchayat bodies and school management was key to smooth operations. Toilet designs were adapted based on the available space in each school, ensuring they met the required standards. Rigorous quality assurance measures were followed, including monitoring the materials and their ratios used during construction. These facilities now serve a total of 188 students—79 in Chai (37 girls, 42 boys) and 109 in Boregaon (53 girls, 56 boys)—contributing to a more hygienic and supportive learning environment.



## **Behavior Change and Communication (BCC): Student Participation**

The Behavior Change and Communication (BCC) Program is a 10-month, activity-based initiative designed to ensure students adopt proper sanitation behaviors and fundamental hygiene practices, while also promoting long-term sustainability of school sanitation infrastructure. The program uses a cascading training model, where students who exhibit leadership qualities are selected as champions. These champions are trained by our team and, in turn, lead their peers in similar activities.

By incorporating elements of gamification, the program makes learning fun and engaging. Students not only learn how to maintain clean toilets and practice proper handwashing techniques, but also gain awareness about menstruation and its management, waste segregation, and broader waste management practices. This interactive approach fosters a deeper commitment to hygiene and sanitation among the student body.

## Behaviour Change and Communication (BCC): Parent Participation

To ensure the long-term sustainability of the School WaSH Program, it was essential to involve parents as key stakeholders. The program engaged parents by forming school-level committees, encouraging them to take ownership of school-related activities and rally support from other parents. This involvement also increased teacher vigilance and accountability.

The WaSH team conducted structured workshops where parents were motivated to contribute to the school's improvement. As a result, parents led initiatives such as tree planting, building fences, creating kitchen gardens, making first aid boxes, constructing compost pits, and installing pipelines for water connectivity.



**Reach- 215 (180 female + 35 Male)**



The background of the page features a photograph of three young girls in school uniforms. They are standing in a line, slightly out of focus, against a brick wall. The uniforms consist of blue and white checkered shirts and grey-blue dresses with red straps. The text is overlaid on the right side of the image.

# Education: Rakesh Jain Madhyamik Vidyamandir (RJMV)

**The year 2023-24 was an eventful one, marked by numerous collaborations and impactful initiatives at Rakesh Jain School.**

In memory of Mr. Rakesh Jain, a new school building was constructed with 8 classrooms, each accommodating 70-80 students, funded by the Urmila Jain Foundation. Tata Better Soles generously donated shoes, with 113 pairs distributed in July and 150 pairs in August.

We strengthened our academic support by partnering with Vigyan Ashram, Pune, through an IBT Program set to begin in the upcoming academic year. In January, empowHER India and the Urmila Jain Foundation organized a medical health camp with R.J. Sankara Eye Hospital and Dr. Patwardhan Hospital, conducting eye tests for 460 students and staff, providing glasses to 12 students, and referring 13 for further consultation. Additionally, 209 girls and women staff underwent blood tests, followed by a blood group testing camp in February, covering 455 students and staff.

To offer enriching extracurricular experiences, 200 girls enjoyed a Women's IPL match in March, and 300 students attended a Men's IPL match (MI vs KKR) organized by the Reliance Foundation. In January, a training program on Indian Classical Dance Forms, engaged 100 students.

The school also saw infrastructure improvements, including the repair of two IBT halls and the establishment of a new science lab, supported by L&T. Additionally, empowHER India provided ongoing financial support for internet services, staff salaries, and maintenance.







SHOE DISTRIBUTION



IPL



DANCE WORKSHOP



LAB







## **BRINGING THE JOY OF READING TO CHILDREN**

In FY 2023-24, empowHER India introduced its innovative Hanging Library initiative, distributing sets to 26 schools across the Alibaug, Karjat, and Pen blocks in Raigad district. Each library set contains 162 carefully selected books aimed at fostering a love for reading among upper primary students, with books in Marathi, Hindi, and English. These include storybooks, comics, biographies, science experiments, and materials on adolescent health. The libraries will benefit 2,947 students (1,452 girls and 1,495 boys) in 22 Raigad Zilla Parishad schools, three government-aided schools, and one Ashram school.

## **STRENGTHENING OUR FOUNDATION**

POSH (Prevention of Sexual Harassment) and CPP (Child Protection Policy) Training: Held on December 26, 2023, with 38 participants. The session, led by Ms. Ujwala Masdekar, focused on understanding the organization's responsibilities in relation to POSH and CPP policies.

POCSO (Protection of Children from Sexual Offences) Training: Conducted on April 5th and 6th, 2024, by Rati Foundation, this training highlighted the importance of safeguarding children from sexual harassment and initiated the creation of a comprehensive protection policy and redressal mechanism.

Inclusive Equality and Secularism Training: A two-day program led by Mr. Shrikant Laxmikant on February 3rd and 17th, 2024, aimed at reinforcing the principles of equality, inclusivity, and secularism across the organization.

These training sessions emphasized empowHER India's dedication to building internal capacities and empowering staff to enhance program impact.

# Our donors and supporters



## LEADERSHIP AND BOARD OF TRUSTEES

### FOUNDER

Mrs Urmila Jain

### BOARD OF DIRECTORS AND TRUSTEES

Mr. Sanjiv Anand - Chairman

Mr. Utsav Kapadia

Ms. Shefali Kapadia

Mrs. Varsha Jain

Mr. Vishal Jain

### ADVISORY BOARD

Mr. Sushil Kumar Jiwrajka

Mr. Paras Chowdhary

### CEO

Ms. Anamara Baig

### INSTITUTIONS AND CORPORATE

#### PARTNERS

Shri Shreyans Trust

Sevak Trust

Roop Manek Bhanshali Charitable Trust

Alkyl Amines Chemicals Limited

Overseas Polymers Pvt. Ltd.

Sykes & Ray Equities (I) Ltd.

Engichem Speciality Chemicals Pvt. Ltd.

United Way

### INDIVIDUAL DONORS

Rachna Shamsi

Anandi Vangal

Sujata Kapadia

Lalan Kapadia

Rishabh Saraf

Samir Salvi

Radhika Parameswaran

Varun Vakil

Shefali Kapadia

Rahul Vohra

Vineeta Salvi

Abuzar Zakir

Sneh

Saanya Sharma

Rashida

Saif

Lotika

Jyotirmoy Chatterji

### FRIENDS OF empowHER INDIA

Arti Vakil

Saahil,

Chaitanya

Maira

# Media and Press Highlights:

Throughout the year 2023-2024, empowHER India has remained steadfast in its commitment to championing the rights and potential of adolescent girls through diverse platforms, ranging from online news portals to digital magazines, from influential blogs to event coverage, and from thought-provoking interviews to impactful features.



May 2023- An official C20 Engagement Group of the G20 that provides a platform for Civil Society Organizations (CSO) around the world to voice the people's aspirations to the world leaders in G20.

<https://www.youtube.com/live/u022oMga6KM?feature=share>

September 2023 – The GoodSight Magazine Vol 5 Issue 2  
<https://online.fliphtml5.com/noggh/itgs/#p=75>

December 2023 - Indiaspora (Blog by Anamara Baig)  
<https://www.indiaspora.org/blog/on-a-warm-november-afternoon-em-powher-blog>

March 2024 - Event Coverage by Maharashtra Majha (Health Check Camp in Kadav)  
<https://www.youtube.com/watch?v=R36LDQbrkXM>





Empowering Women. Transforming Villages

### Adolescent Girls Programme

Life Skills, Health, Gender Equity

जीवन कौशल्य, आरोग्य, लिंगभाव समता

Empowerment = Awareness + Acceptance + Action

सशक्तीकरण = जागरुकता + स्वीकृती + कृती

हस्तपुस्तिका

जीवन कौशल्य



# Financials

The Maharashtra Public Trusts Act, 1950

SCHEDULE - IX  
[Vide Rule 17 (1)]

Name of the Public Trust : **EMPOWERER FOUNDATION (Formerly Known As SKS CHAKSHU FOUNDATION)**

Registration No. - E - 14582

Income and Expenditure Account for the year ending 31st March, 2024

EXPENDITURE	Rs.		INCOME	Rs.	
To Expenditure in respect of properties :-			By Rent (accrued) (realised) *		2,182,950.00
Rates, Taxes, Cesses	-		(Gross TDS - Rs. 2,16,296/-, P.Y.-2,02,950/-)		
Repairs and maintenance	-		By Interest (accrued) (realised) *		
Salaries	-		On Securities		
Insurance	-		On Income Tax Refund		
Depreciation (by way of provision of adjustments)	-		On Bank Account		
Other Expenses	-		i) On Fixed Deposit		
To Establishment Expenses (As per Annexure "F")		4,901,747.74	ii) On S. B. A/C	110,299.00	110,299.00
To Remuneration to Trustees			By Dividend		
To Remuneration (in the case of a math) to the head of the math, including his household expenditure, if any			By Donations in Cash or Kind		40,800.00
To Legal & Professional Charges		2,145,956.00	By Capital gains on Mutual Fund Units		5,597,088.00
To Audit Fees		47,200.00	By Grants		
To Contribution and Fees			By Income from other sources		489.82
To Amount written off :			By Transfer from Reserve		
(a) Bad Debts	-		By Deficit carried over to Balance Sheet		738,216.86
(b) Loan Scholarship	-				
(c) Irrecoverable Rents	-				
(d) Other Items	1,853.00	1,853.00			
To Security Charges (Edu)					
To Depreciation					
To Capital Losses on Mutual Fund Units					
To Amount transferred to Reserve or Specific Funds					
To Expenditure on Objects of the Trust					
(a) Religious	-				
(b) Educational	-				
(c) Medical Relief	-				
(d) Relief of Poverty	1,572,887.00	1,572,887.00			
(e) Other Charitable Objects	-				
To Surplus/(Deficit) carried over to Balance Sheet					
<b>Total Rs.</b>		<b>8,089,643.74</b>	<b>Total Rs.</b>		<b>8,089,643.74</b>



As per our report of even date  
FOR M.L. SHARMA & CO.  
FIRM REGN NO. 109693W  
CHARTERED ACCOUNTANTS

\* Strike off whichever is not applicable

*(Signature)*  
(Vikash L. Bajaj) Partner  
Membership No. 104892

*(Signature)*

For empowerER Foundatio

*(Signature)*

Trustee

Place : MUMBAI  
Date : 24 SEP 2024

TRUSTEES



Name of the Public Trust : **EMPOWER FOUNDATION (Formerly Known As SRS CHAKSHU FOUNDATION)**

Registration No E-1452

Balance Sheet as on 31st March, 2024

FUNDS AND LIABILITIES		Rs.	Rs.	PROPERTY AND ASSET		Rs.	Rs.
<b>Trusts Funds or Corpus :- (As Per Annexure "A")</b>				<b>Immovable Properties :- (At Cost)(As Per Annexure "B")</b>			
Balance as per last Balance Sheet		40,635,430.00		Balance as per last Balance Sheet		24,439,517.00	
Add: Donation Received during the year (as per details attached)		1,650,000.00		Additions:			
		42,285,430.00		i) Land of training centre		-	
Less: Adjustment to Income & Expenditure account		-	42,285,430.00	ii) Building of training centre		-	
				iii) Building - School		-	
				Less: Sales during the year		-	
				Depreciation up to date		-	24,439,517.00
<b>Other earmarked Funds :-</b>							
(Created under the provisions of the trust deed or scheme or out of the Income)				<b>Investments :- (As Per Annexure "C")</b>			
Depreciation Fund		-		Note: The market value of the above investments is Rs. 5,53,02,722.61/-			30,127,240.73
Sinking Fund		-					
Reserve Fund		-		<b>Fixed Assets :- (As Per Annexure "D")</b>			
Class Room Fund		-		Balance as per last Balance Sheet		1,545,019.00	
Any other Fund (As Per Annexure "A")		28,153,395.44	28,153,395.44	Additions during the year		810,948.50	
				Less: Sales during the year		-	
<b>Loans (Secured or Unsecured) :-</b>				Depreciation up to date		-	2,155,696.90
From Trustees		-					
From Others		-		<b>Loans (Secured or Unsecured): Good / doubtful Loans Scholarships (As Per Annexure "E")</b>			
				Other Loans		840,000.00	840,000.00
<b>Liabilities :-</b>							
For Expenses		85,964.00		<b>Advances :-</b>			
For Micro Financing Scheme		120,000.00		To Trustees		-	
For Rent and Other Deposits		38,220.00		To Employees		26,531.00	
For Others		15,677.00	236,861.00	To Contractors		-	
				To Lawyers		-	
				To Deposits		118,900.00	
<b>Income and Expenditure Account :-</b>				To Others		530,479.00	877,910.00
Balance as per last Balance Sheet		632,294.37					
Less: Appropriation, if any		-		<b>Income Outstanding :-</b>			
Add:(Less) : Surplus/(Deficit) as per Income and Expenditure Account		(738,218.88)		Rent Receivables		-	
				Interest Receivables		-	
Add Transfer from Corpus Fund		(105,922.49)	(105,922.49)	Other Receivables		86,530.00	86,530.00
				<b>Cash and Bank Balances :-</b>			
				(a) In Saving Account with		3,285,583.72	
				(b) In Fixed Deposit Account		-	
				(c) With the Trustee		-	
				(d) With the manager		-	3,285,583.72
				<b>Income and Expenditure Account :-</b>			
				Balance as per Balance Sheet		-	
				Less: Appropriation, if any		-	
				Less: Surplus as per Income and Expenditure Account		-	
<b>Total Rs.</b>			<b>70,572,753.95</b>	<b>Total Rs.</b>			<b>70,572,753.95</b>



As per our report of even date  
FOR M. L. SHARMA & CO.  
FIRM REGD NO. 109633W  
CHARTERED ACCOUNTANTS

*(Signature)*  
Vishal L. Dajani Partner  
Membership No. 104882

\* Income Outstanding  
(If accounts are kept on cash basis)  
Rent  
Interest  
Other Income

TOTAL RS. :

*Other Income*

The above Balance Sheet to the best of our belief contains a true account of the Funds and Liabilities and of the Property and Assets of the Trust.

For EMPOWER Founda

*(Signature)*

TRUSTEES

TRU

Place: MUMBAI  
Date: 24 SEP 2024



## SOCIAL MEDIA



<https://www.facebook.com/empowHERIndiaFoundation/>



[https://www.instagram.com/empowHER\\_india/](https://www.instagram.com/empowHER_india/)



[https://twitter.com/empowHER\\_India](https://twitter.com/empowHER_India)



[https://www.youtube.com/@empowHER\\_India](https://www.youtube.com/@empowHER_India)



<https://www.linkedin.com/company/empowHER-india-foundation>



<https://empowHERindia.org/>



[info@empowHERindia.org](mailto:info@empowHERindia.org)

GH SCHOOL, SHIVKAR





Empowering Women. Transforming Villages

